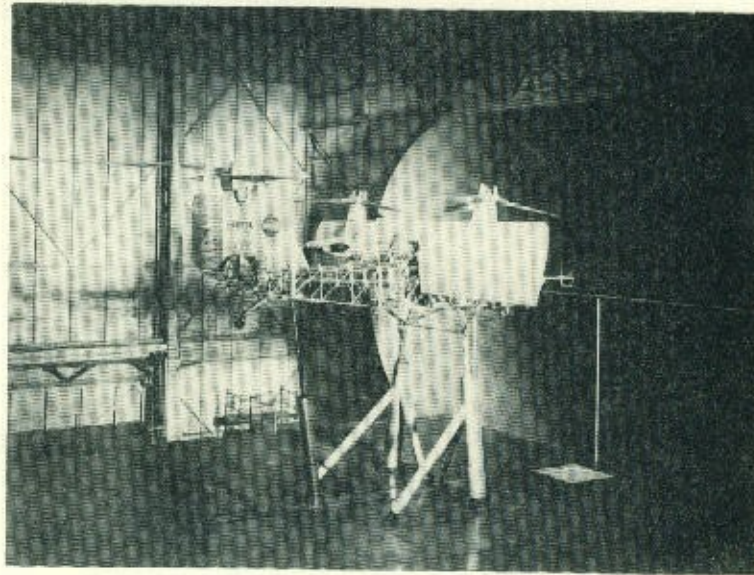


FULL-SCALE TUNNEL



Open throat double return Fan drive
Test Section 30 x 60 feet

Models and Supports

50 ft. Span 15,000 pounds (max.) complete airplane
 20 ft. semi span wings
 Free-flight dynamic models
 Shielded struts and 6-component scale balance
 Reflection plane
 Air supply for model motors: 2 lb/sec. at 300 psi, 12 lb/sec at 45 psi.

Data Speed 0 to 37 knots continuous
 22 to 95 knots 24 steps

Atmospheric stagnation pressure and temperature

Cost:

<u>Fiscal Year</u>	<u>S & E</u>	<u>R & D</u>	<u>C of F</u>	<u>Project No.</u>
1929	\$157,684		\$871,756	(Public law 778)
1930-1953	70,868			
1961		\$ 7,066		
1963		31,440		
Total =	\$228,552	\$38,506	\$871,756	