

PEN00246

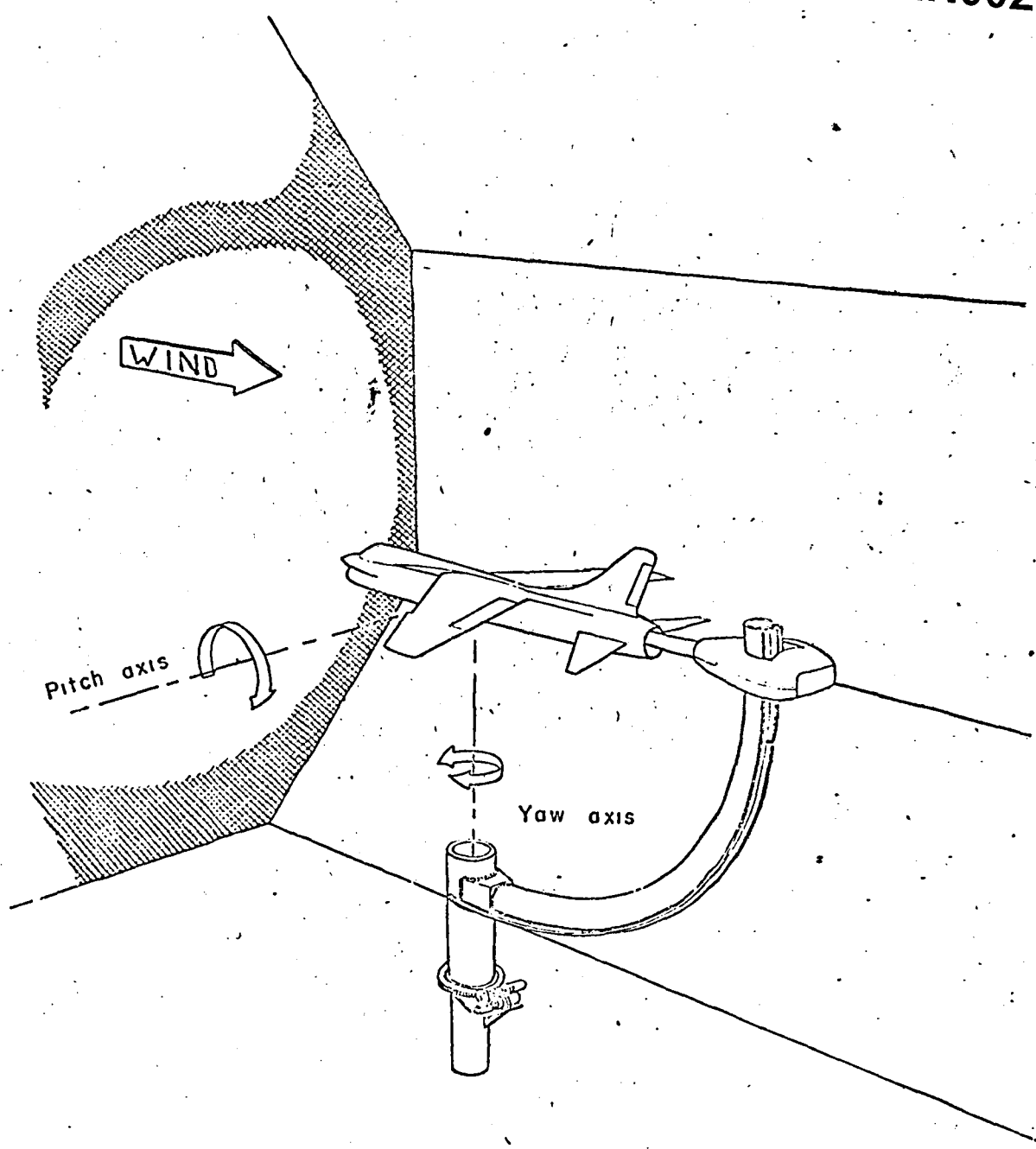


Figure 3.- Schematic diagram of model mounted for static-force tests.

12 foot Low Speed Tunnel

Don Howe - F.F. Tunnel

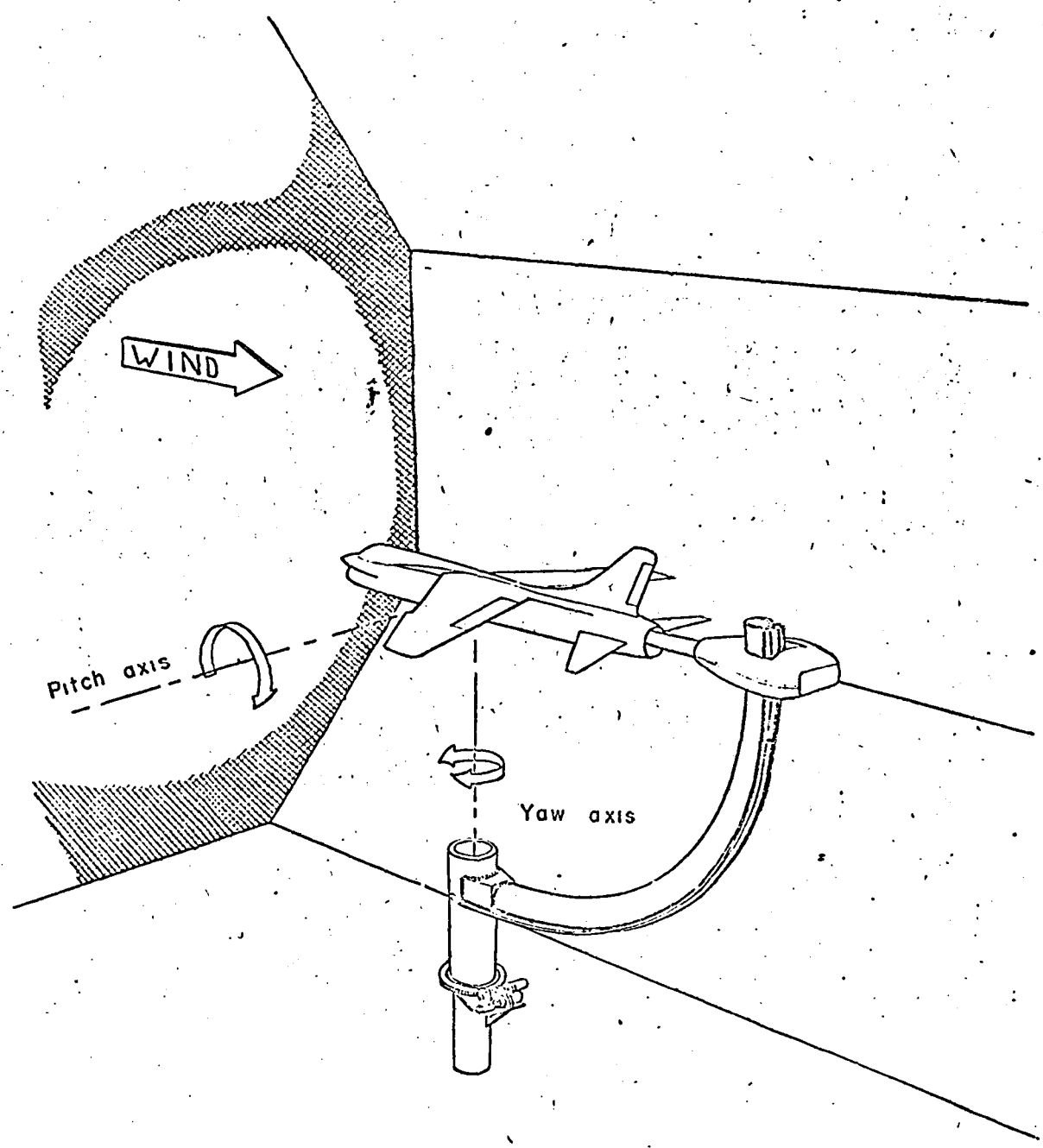
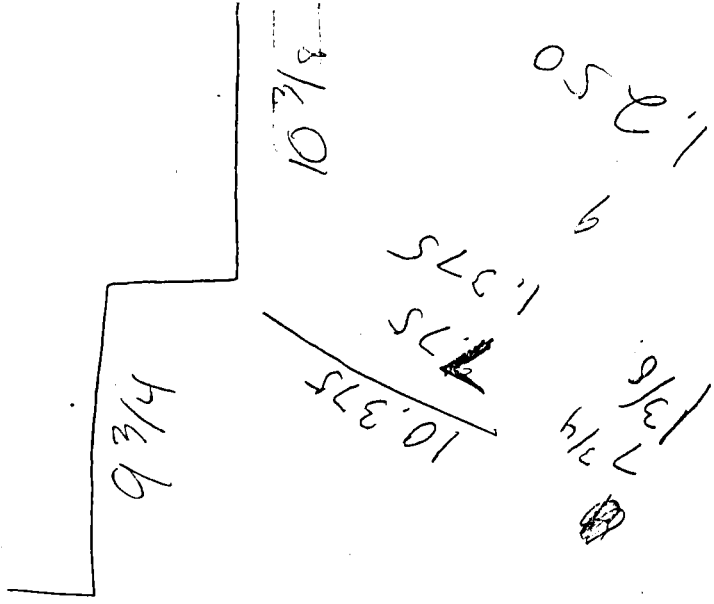


Figure 3.- Schematic diagram of model mounted for static-force tests.

# 12 foot Low Speed Tunnel

Don Howes - F.F. Tunnel

$$\tan 10^\circ = \frac{X}{20.125}$$



base  $\frac{127}{39} - \frac{7}{16}$

top  $\frac{1}{2}$

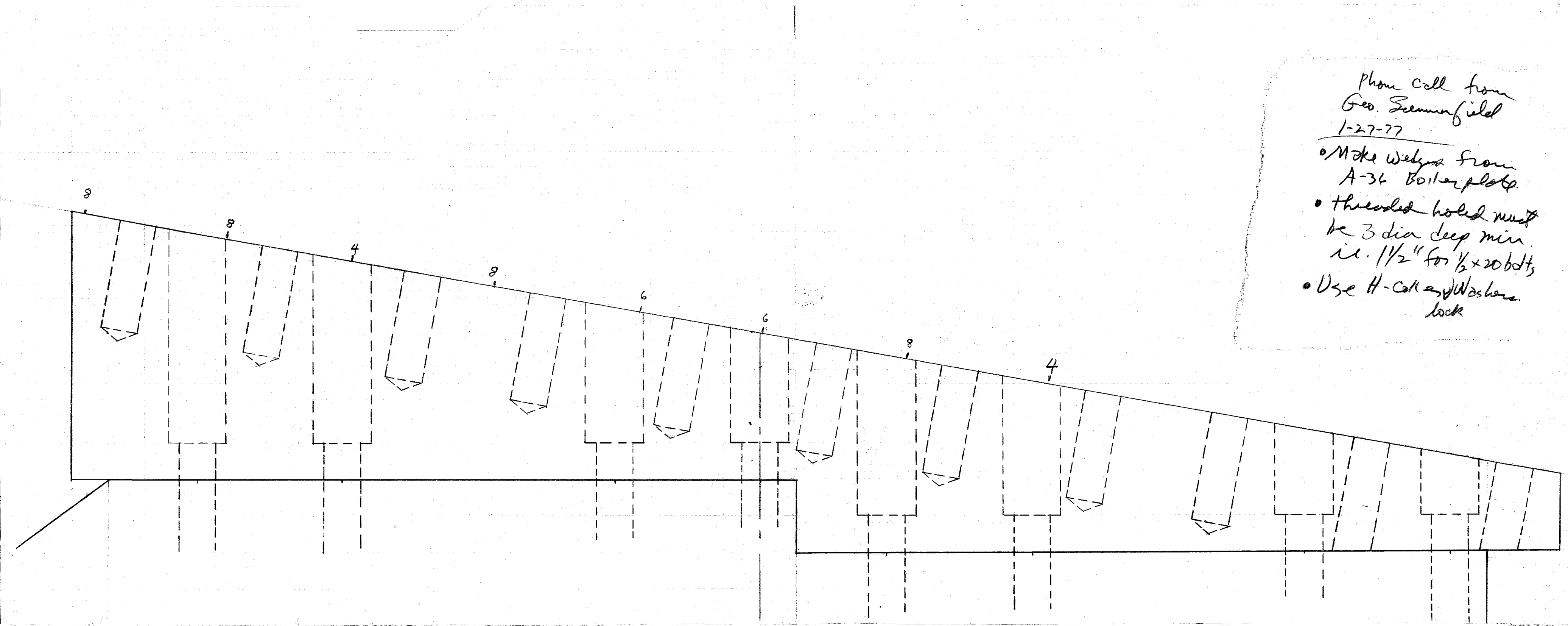
$20.435$



$$\tan 10^\circ = \frac{1}{\frac{X}{20.125}}$$

Phone call from  
Geo. Greenfield  
1-27-77

- Make welds from  
A-36 Boiler plate.
- threaded holes must  
be 3 dia deep min.  
id. 1/2" for 1/2 x 20 bolts
- Use H-Coll and Washers  
lock



ABS1 Type 304  
DTS 75K

LD-512133  
G20 Surround  
M3 439

Y C

FRM:  
LX-512115

39

22 65

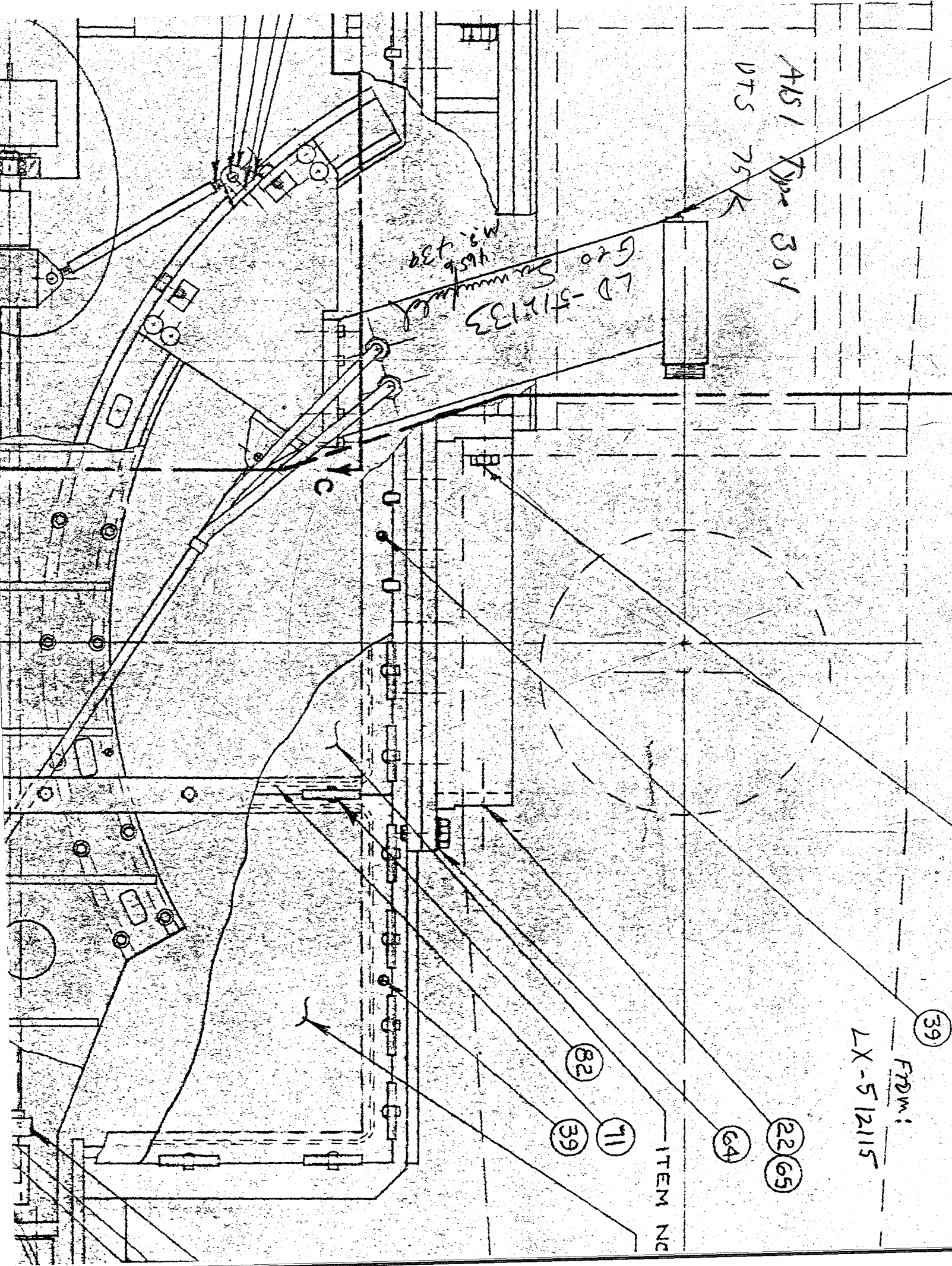
64

71

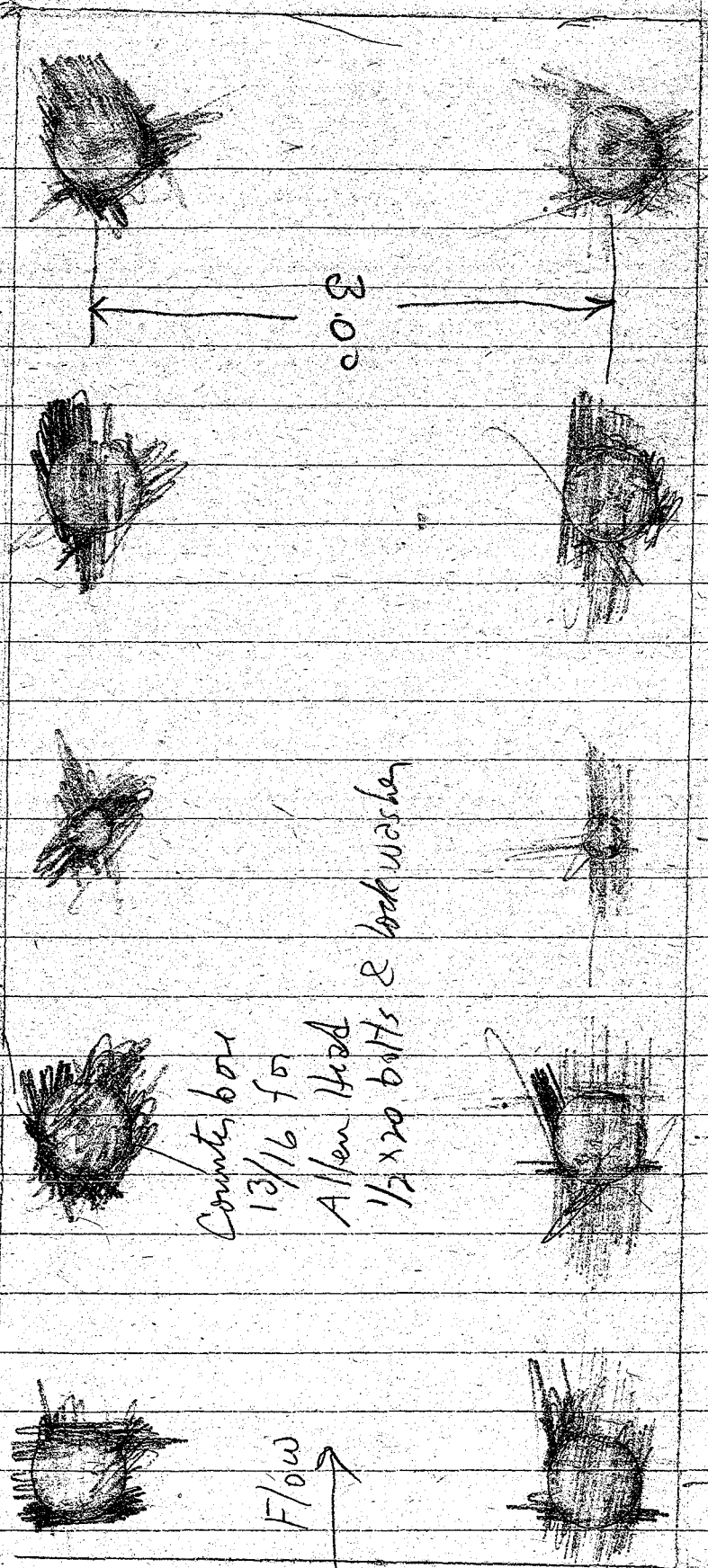
39

82

ITEM NC



4'0"



3'0"

2'00

2'00

1'75

2'00

Counter box  
 1 3/16 for  
 Allen Head  
 1/2 x 20 bolts & lock washer

Flow

$$\frac{lb}{Mv}$$

$$\frac{lb}{Mv}$$

$$\frac{1}{v}$$

$$\frac{lb}{Mv} = \frac{1}{v}$$

See  $M=8$  VDT, HT4 Tu. Tests Notebook

Calib. Section for Original plot of,  $M=8$  VDT,  $M=8.5$ , CAT.  
calibrations.



